

Lyophilized R - PHYCOERYTHRIN from *Porphyra tenera*
Data sheet Lot# PBT-RPE1Lyo/001

Molecular weight	240 kDa
Subunit structure	($\alpha\beta$) ₆ γ
Purity	Ratio A ₅₆₅ /A ₂₈₀ greater than 5.0
Absorption maxima	565 nm \pm 2nm
Emission maxima	576 nm \pm 2nm
Absorbance	A ^{1%} ₅₆₅ = 82

RPE concentration in powder

50% (w/w)

Form

Lyophilized powder from RPE solution in phosphate buffer with sugar as additive.
 NO AMMONIUM SULFATE IS PRESENT IN THE PRODUCT.

Storage

Store at 4°C in dessicator, in dark. Do not freeze.

Reconstitution

Redissolve the powder in sodium phosphate buffer pH7 or any other buffer and adjust concentration using extinction coefficient.

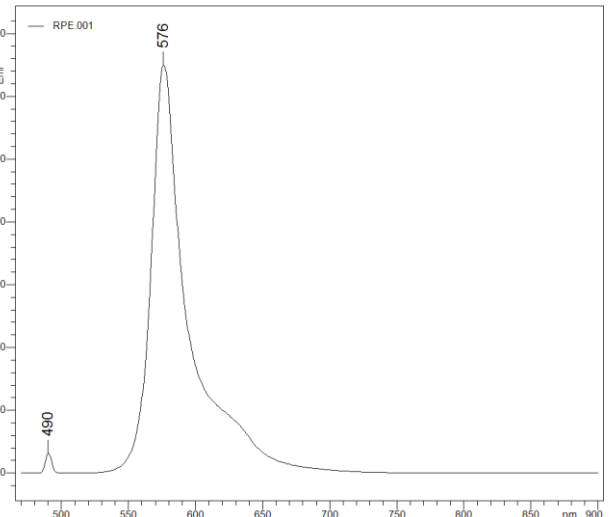
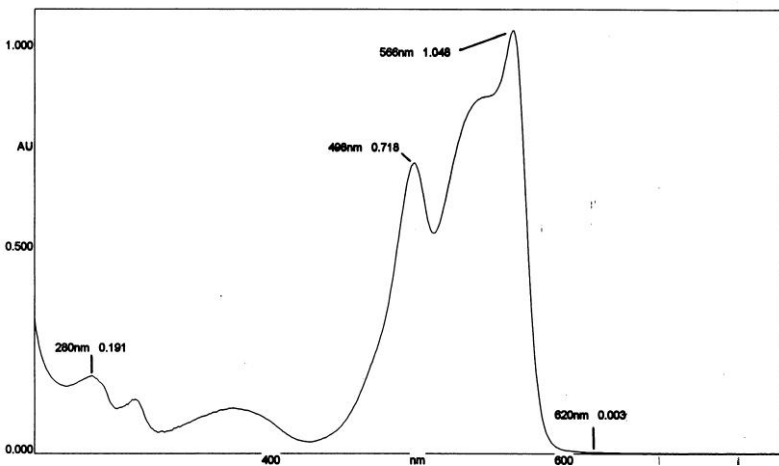
Shelf life

One year under proper storage conditions.

ABSORBANCE SPECTRUM

EMISSION SPECTRUM

Excitation at 488 nm. Arbitrary units.
 (Spectrofluorometer Shimadzu RF-5301 PC)



ABSORBANCE RATIO

	Specification	Results
A ₅₆₅ /A ₄₉₈	<1.5	1.46
A ₆₂₀ /A ₅₆₅	<0.02	0.003
A ₅₆₅ /A ₂₈₀	>5.0	5.48