

Lyophilized B - PHYCOERYTHRIN from *Porphyridium cruentum*
Data sheet Lot# PBT-BPE Lyo/001

Molecular weight	240 kDa
Subunit structure	($\alpha\beta$) ₆ γ
Purity	Ratio A ₅₄₅ /A ₂₈₀ greater than 5.5
Absorption maxima	545 nm \pm 2nm
Emission maxima	575 nm \pm 2nm
Absorbance	A ^{1%} ₅₄₅ = 100.4

BPE concentration in powder

31% (w/w). The BPE amount indicated on the bottle is the accurate one. The total powder amount is higher according to the PE concentration in %.

Form

Lyophilized powder from BPE solution in phosphate buffer with sugar as additive.
 NO AMMONIUM SULFATE IS PRESENT IN THE PRODUCT.

Storage

Store at 4°C in dessicator, in dark. Do not freeze.

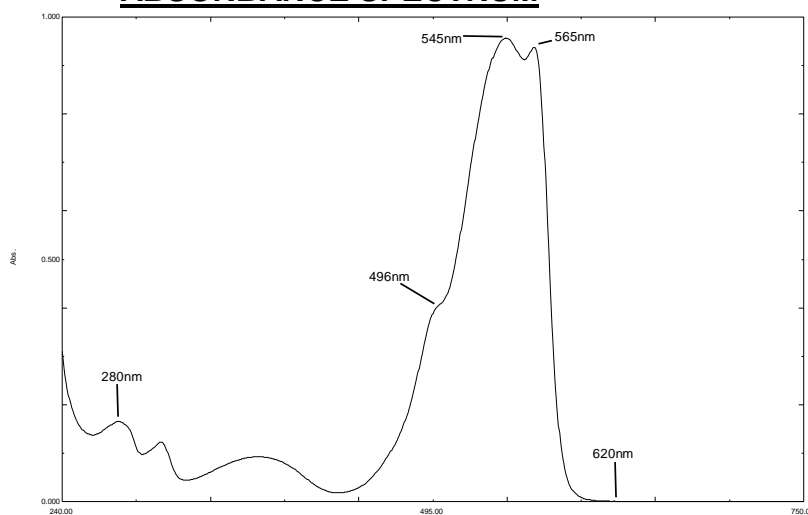
Reconstitution

Redissolve the powder in sodium phosphate buffer pH7 or any other buffer and adjust concentration using extinction coefficient.

Shelf life

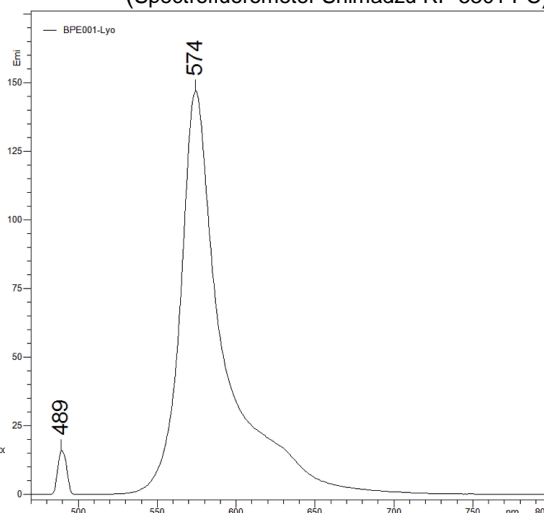
One year under proper storage conditions.

ABSORBANCE SPECTRUM



EMISSION SPECTRUM

Excitation at 488 nm. Arbitrary units.
 (Spectrofluorometer Shimadzu RF-5301 PC)



ABSORBANCE RATIO

	Specification	Results
A ₆₂₀ /A ₅₄₅	<0.01	0.001
A ₅₄₅ /A ₂₈₀	>5.5	5,79
A ₅₆₅ /A ₄₉₆	<2.7	2.38